



Buddhist Temples



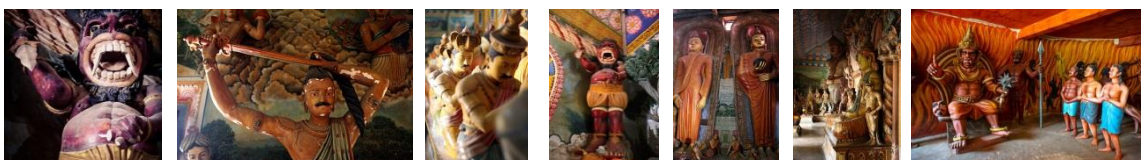
Dickwella is the location of Sri Lanka's largest seated Buddha statue which is 160ft tall. Walls in the rooms of the building behind the statue are decorated with a library of colourful pictures depicting scenes from the life of the Buddha and punishments of miscreants. The two-storied library is also a world famous art gallery.



The Wewurukannala temple, a destination for pilgrims built on a hill on eight acres, is divided into three parts, the oldest of which dates back to the 18th-century reign of King Rajadhi and has a more modest Buddha worked into the structure's outward-facing architecture. The second element, the giant Buddha statue, leads to the third aspect of Wewurukannala Vihara, the Tunnel of Hell.



Down in the tunnel, life-sized models illustrate what will happen should one succumb to those earthly temptations lining the path to enlightenment. Highlights include immersion in boiling cauldrons, disembowelment and sinners being hacked to pieces by human-like demons with fangs.





On the front wall of the temple museum there is a large clock with the mechanism of the clock, protected by a glass cubicle, inside the building. The clock was built by a local craftsman, W. Elaris De Silva from Maggona, in 1926 and purchased by the resident monk in 1928 for a sum of 3000 rupees. This mechanical masterpiece is still working today and rings for the morning and evening service rituals.

