

The estate is 200 acres and comprises 150 acres of tea. The balance of the plantation is rubber, cinnamon and coconut. There is a well-equipped tea factory on the property with most machines made in the United Kingdom over 140 years ago, making it a living, working museum.

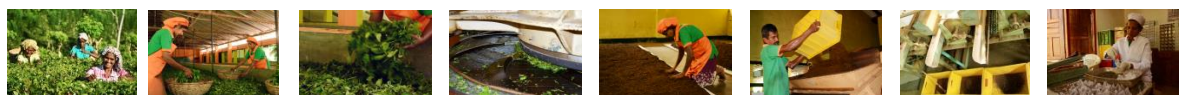
The estate is not a mass producer of tea but makes very small quantities of the choicest teas, winning international recognition with their famous Virgin White Tea, a tea untouched by hand.



The factory produces only a small quantity of exclusive teas with the plantation priding itself on not using any pesticides or insecticides.

The tea estate is the only Sri Lankan estate closest to the sea helping to create the uniqueness of the teas from the soils and climate. Nestled nearby is a rainforest which is a safe haven for birds and animals.

You can view the whole process of creating tea from the picking in the plantation to the processes in factory, sorting and cleaning, withering, rolling, fermenting, drying, sifting and grading, packaging.



In the tea factory shop you can purchase products ranging from the traditional Pure Ceylon tea to the elegant Earl Grey tea as well as the priceless Virgin White tea.

